

Mechanical Toilet Flushing Units for SLR 21

SLW 50, SLW 51, SLW 52, SLW 53, SLW 54



SLW 50



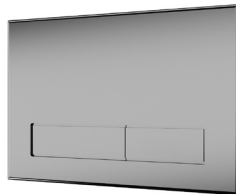
SLW 51



SLW 52



SLW 53

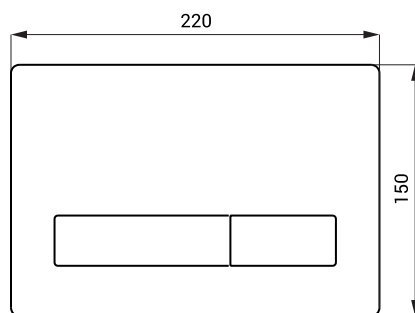


SLW 54

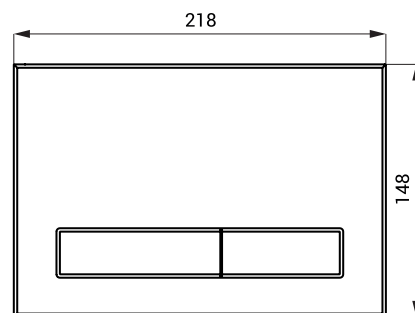
Characteristics

- flush plate for two-stroke mechanical flushing into the frame SLR 21

Dimensions



SLW 50 - 53



SLW 54

Technical Specification

Dimension SLW 50 - 53

220 x 150 x 12,5 mm

Dimension SLW 54

218 x 148 x 12 mm

Supply Specification

SLW 50	- Supply No. 04500	flush plate, white plastic
SLW 51	- Supply No. 04510	flush plate, polished chrome
SLW 52	- Supply No. 04520	flush plate, brushed chrome
SLW 53	- Supply No. 04530	flush plate, black plastic
SLW 54	- Supply No. 04542	flush plate, stainless steel

Recommended Accessories

SLR 21	- Supply No. 08210	mounting frame with concealed tank for wall hung toilets, for installation to the plasterboard
--------	--------------------	--