

# Black Ceramic Urinal with the Radar Flushing Unit SLP 89S



**SANELA**  
we make water cool®



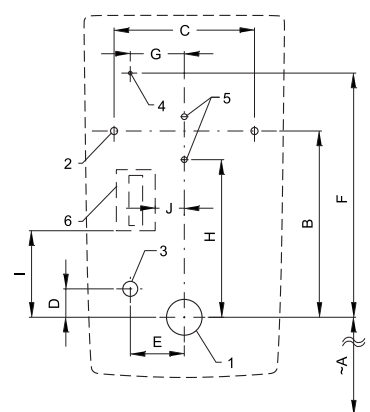
SLP 89S - LA FONTANA

## Characteristics



- includes Bluetooth control (Sanela Control app available for download)
- economy flushing by 1 liter of water
- easy installation by the help of paper drill template
- whole flushing unit is placed behind the urinal
- system reacts only on the direct use of the urinal (it analyses changes, which are proceeded inside of the urinal, when a liquid is flowing through)
- adjustable flushing time 0,5 - 15,5 s
- parameter setting and communication with the electronics via the Sanela Control app (Bluetooth) or the SLD 04 remote control (acoustic indication of setting) without dismantling the urinal
- automatic flushing after each 6 hours non-use
- possibility to regulate a water flow by the angle valve
- radar flushing unit recharges a water to the siphon after each flushing
- black matt finish

## Installation Drawing



- 1 - water outlet Ø 50 mm
- 2 - holes for fitting
- 3 - water supply
- 4 - power supply
- 5 - holes for wall plug
- 6 - power supply (SLP 89Z)

## Technical Specification

### Operating voltage

- SLP 89S 24 V DC
- SLP 89Z 230 V AC/50 Hz

### Power input

8 W

### Recommended flow pressure

0,1 - 0,6 MPa

### Rate of flow

18 l/min (inf. data)

### Water inlet

male thread G 1/2"

### Water outlet

female thread G 1/2"



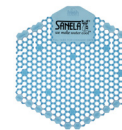
SLA 11



SLA 11A



SLA 11B



SLA 11C

Dimensions (mm)	A	B	C	D	E	F	G	H	I	J
SLP 89 - LA FONTANA	470	270	200	40	85	370	70	255	120	65

\* for the height of the front edge of the urinal 650 mm above the floor

## Supply Specification

- SLP 89S - Supply No. 01890 ceramic urinal with radar flush including Bluetooth module, electromagnetic valve,
- SLP 89Z - Supply No. 01891 connecting hoses, angle valve with filter and check valve, siphon, paper drill template, power supply (SLP 89Z)

## Recommended Accessories

- SLZ 01Y - Supply No. 05012 power supply 24 V DC for operating of max. 5 pcs. of flushing units
- SLZ 01Z - Supply No. 05011 power supply 24 V DC for operating of max. 9 pcs. of flushing units
- SLZ 04Y - Supply No. 05042 power supply 24 V DC on DIN rail, for operating of max. 5 pcs. of flushing units
- SLZ 04Z - Supply No. 05041 power supply 24 V DC on DIN rail, for operating of max. 9 pcs. of flushing units
- SLZ 04X - Supply No. 10049 power supply 24 V DC on DIN rail, for operating of max. 15 pcs. of flushing units
- SLZ 06 - Supply No. 05060 power supply 24 V DC pro max. 1 pc. of flushing unit
- SLD 04 - Supply No. 07040 remote control for an adjustment of parameters
- SLA 11 - Supply No. 06110 deodorising urinal screen - orange colour, mango scent
- SLA 11A - Supply No. 06111 deodorising urinal screen - red colour, kiwi and grapefruit scent
- SLA 11B - Supply No. 06112 deodorising urinal screen - transparent colour, honeysuckle scent
- SLA 11C - Supply No. 06113 deodorising urinal screen - blue colour, cotton bloom scent
- SLR 09 - Supply No. 08090 mounting frame for ceramic urinals with built-in flush or for ceramic washbasins
- SANELA CONTROL APP available for download on the App Store and Play Store