

Ceramic Urinals with the Radar Flushing Unit SLP 24R, SLP 25R



SLP 24 - ALESSI
WITH A COVER



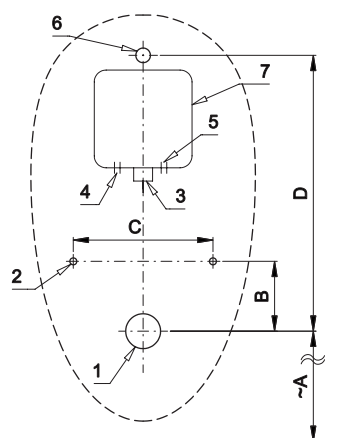
SLP 25 - ALESSI
WITHOUT A COVER

Characteristics



- includes Bluetooth control (Sanela Control app available for download)
- easy installation
- whole flushing unit is placed behind the urinal
- system reacts only on the direct use of the urinal (it analyses changes, which are proceeded inside of the urinal, when a liquid is flowing through)
- adjustable flushing time 0,5 - 15,5 s
- parameter setting and communication with the electronics via the Sanela Control app (Bluetooth) or the SLD 04 remote control (acoustic indication of setting) without dismantling the urinal
- automatic flushing after each 6 hours non-use
- possibility to regulate a water flow by the angle valve
- radar flushing unit recharges a water to the siphon after each flushing

Installation Drawing



- 1 - water outlet \varnothing 50 mm
 2 - holes for fitting
 3 - water supply
 4 - power supply 230 V AC (SLP 24/25RZ)
 5 - power supply 24 V DC (SLP 24/25R)
 6 - inlet fitting
 7 - mounting box

SLP 24, 25

Dimensions (mm)	A	B	C	D
SLP 24 - ALESSI	420	100	200	395
SLP 25 - ALESSI	420	100	200	395

* for the height of the front edge of the urinal 650 mm above floor

Supply Specification

- SLP 24R - Supply No. 01244 ceramic urinal with radar flushing unit including Bluetooth module, plastic
 SLP 25R - Supply No. 01254 mounting box with brass screw coupling, electromagnetic valve and ball valve,
 SLP 24RZ - Supply No. 01245 inlet fitting with a rubber sealing, mounting set, siphon, plastic cover (SLP 24xx),
 SLP 25RZ - Supply No. 01255 power supply (only for models with index RZ)

Technical Specification

- Dimension of mounting box** 140 x 140 x 75 mm
Operating voltage
 ▪ SLP 24R, 25R 24 V DC
 ▪ SLP 24RZ, 25RZ 230 V AC/50 Hz
Power input
 ▪ operating by 24 V DC 8 W
Recommended flow pressure 0,1 - 0,6 MPa
Rate of flow 18 l/min (inf. data)
Water inlet male thread G 3/4"
Water outlet inlet fitting with a rubber sealing



SLA 11



SLA 11A



SLA 11B



SLA 11C

Recommended Accessories

SLZ 01Y	-	Supply No. 05012	power supply 24 V DC for operating of max. 5 pcs. of flushing units
SLZ 01Z	-	Supply No. 05011	power supply 24 V DC for operating of max. 9 pcs. of flushing units
SLZ 04Y	-	Supply No. 05042	power supply 24 V DC on DIN rail, for operating of max. 5 pcs. of flushing units
SLZ 04Z	-	Supply No. 05041	power supply 24 V DC on DIN rail, for operating of max. 9 pcs. of flushing units
SLZ 04X	-	Supply No. 10049	power supply 24 V DC on DIN rail, for operating of max. 15 pcs. of flushing units
SLZ 06	-	Supply No. 05060	power supply 24 V DC for operating of max. 1 pc. of flushing unit
SLD 04	-	Supply No. 07040	remote control for an adjustment of parameters
SLA 11	-	Supply No. 06110	deodorising urinal screen - orange, mango scent
SLA 11A	-	Supply No. 06111	deodorising urinal screen - red, kiwi and grapefruit scent
SLA 11B	-	Supply No. 06112	deodorising urinal screen - transparent, honeysuckle scent
SLA 11C	-	Supply No. 06113	deodorising urinal screen - blue, cotton bloom scent
SLR 01	-	Supply No. 08010	mounting frame to the plasterboard for the urinal with radar flushing unit on the mounting rail
SLR 22	-	Supply No. 08220	mounting frame for plasterboard constructions, for mounting to the floor and to the back wall, is destined for ceramic urinals and Sanela stainless steel urinals (SLPN 07, SLPN 09) and infra-red flushing unit, which is placed above the urinal (SLP 02, SLP 06)
SANELA CONTROL APP			available for download on the App Store and Play Store